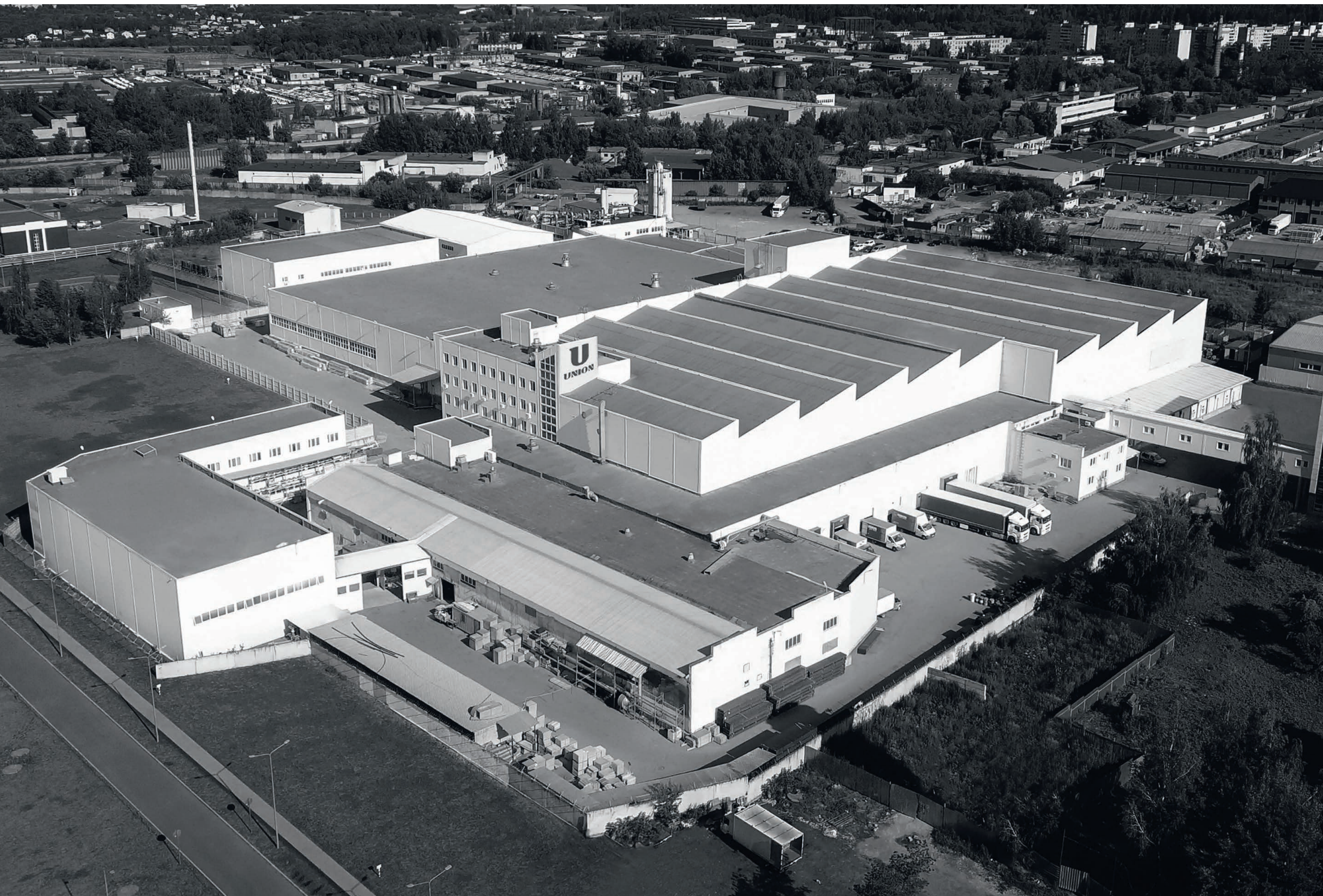




Since 1990 up today UNION company is the market leader in the production of doors and furniture. UNION always strive for excellence, concentrating its efforts on finding new ideas, implementing European quality standards, enlarging the product range and introducing the latest trends in architecture and interior design.

Being an expert in interior doors and partitions development, in 2020 UNION launched to the market a new comprehensive approach to interior design. The concept of "Doors and furniture in the same style" was developed by Italian architects on request and in collaboration with UNION. This solution makes easier implementation the ideas of architects working out an interior and guarantees the stylistic unity of all elements in the design project.

\ Modern doors		\ Wall panels	
FILO-60	16	COVER	74
UNIFLEX-3D	28	\ Walk-in closets and storage systems	
UNIX-60	32	LUMINA	79
LAGO-60	34	ALTO	80
SLIM	40	FORMINA	88
TONDA	44	\ Mirrors	
PIVOT-45	46	ALBA	94
PIVOT-60	47	\ Dining and coffee tables	
\ Traditional doors		MILAN	96
TREND	47	LOTUS	98
ALDA	49	MOON	99
LEVEL	50	\ Modular sofas	
CORDA	51	PORTOFINO	100
GRAND	52	\ Skirting boards	102
PRIMA	53	\ UNION CONTRACT	104
STELLA	54	\ Fittings and accessories	106
\ Metal entrance doors		\ Materials and finishes	108
DELTApro	55		
\ Sliding doors and partitions			
SLIDER	56		
MAGIC	57		
STRATUS	58		
WALLSTREET	72		
TRANSFORMER	73		

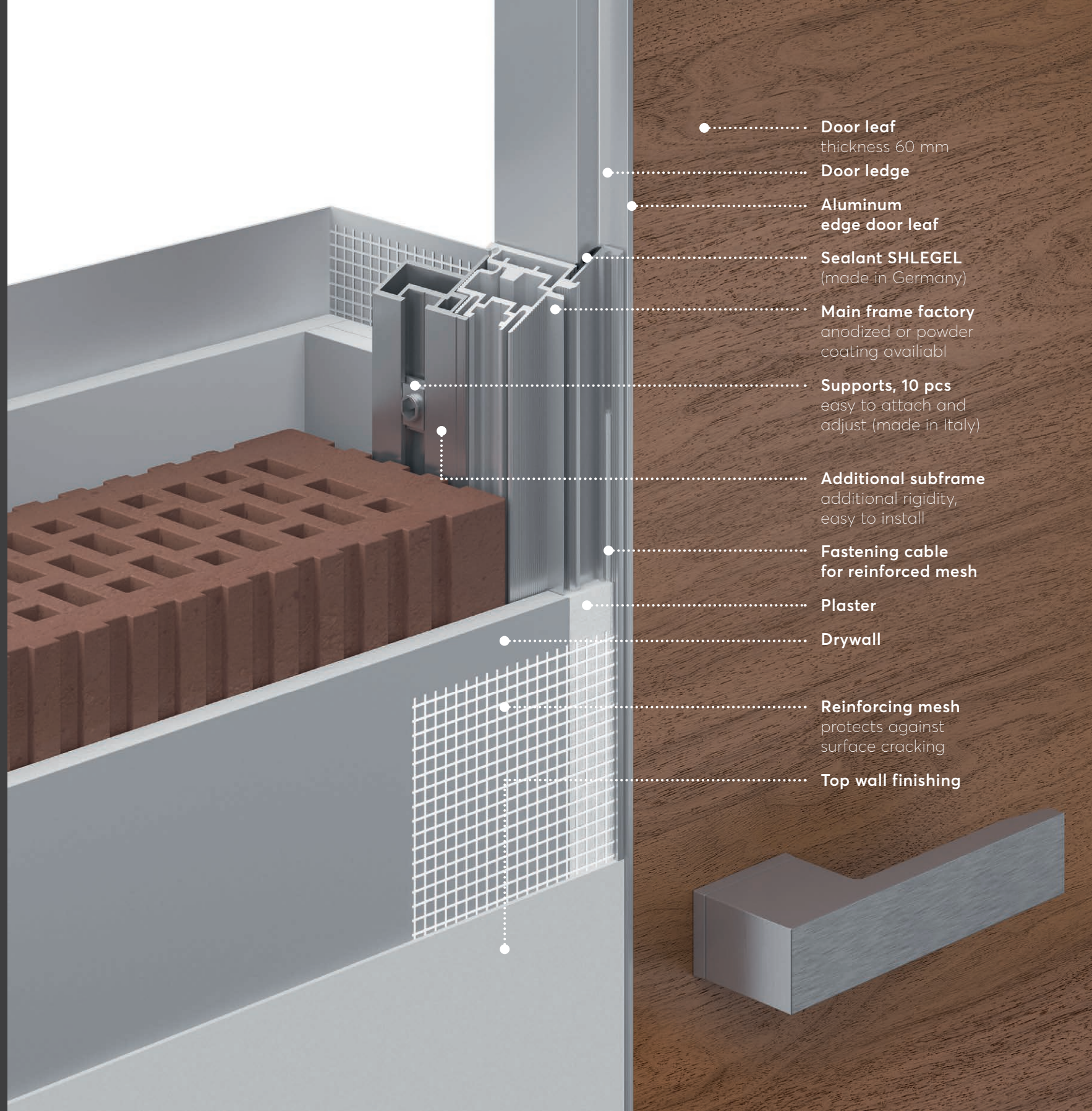




UNION company production was established according to the project of Italian architects based on the latest achievements of the Italian furniture industry. Our advanced production complex operates on more than 40,000 sqm and equipped with modern Italian and German hardware matching fulfillment of any complexity orders in the required volume. Majoring the implementation of complex interior solutions, the UNION company has reached the highest level of the development, thanks to the knowledge of the Italian door and furniture manufacturing traditions, the involve of European experience, technologies and equipment, as well as understanding the customers needs and constant improvement of products and services.

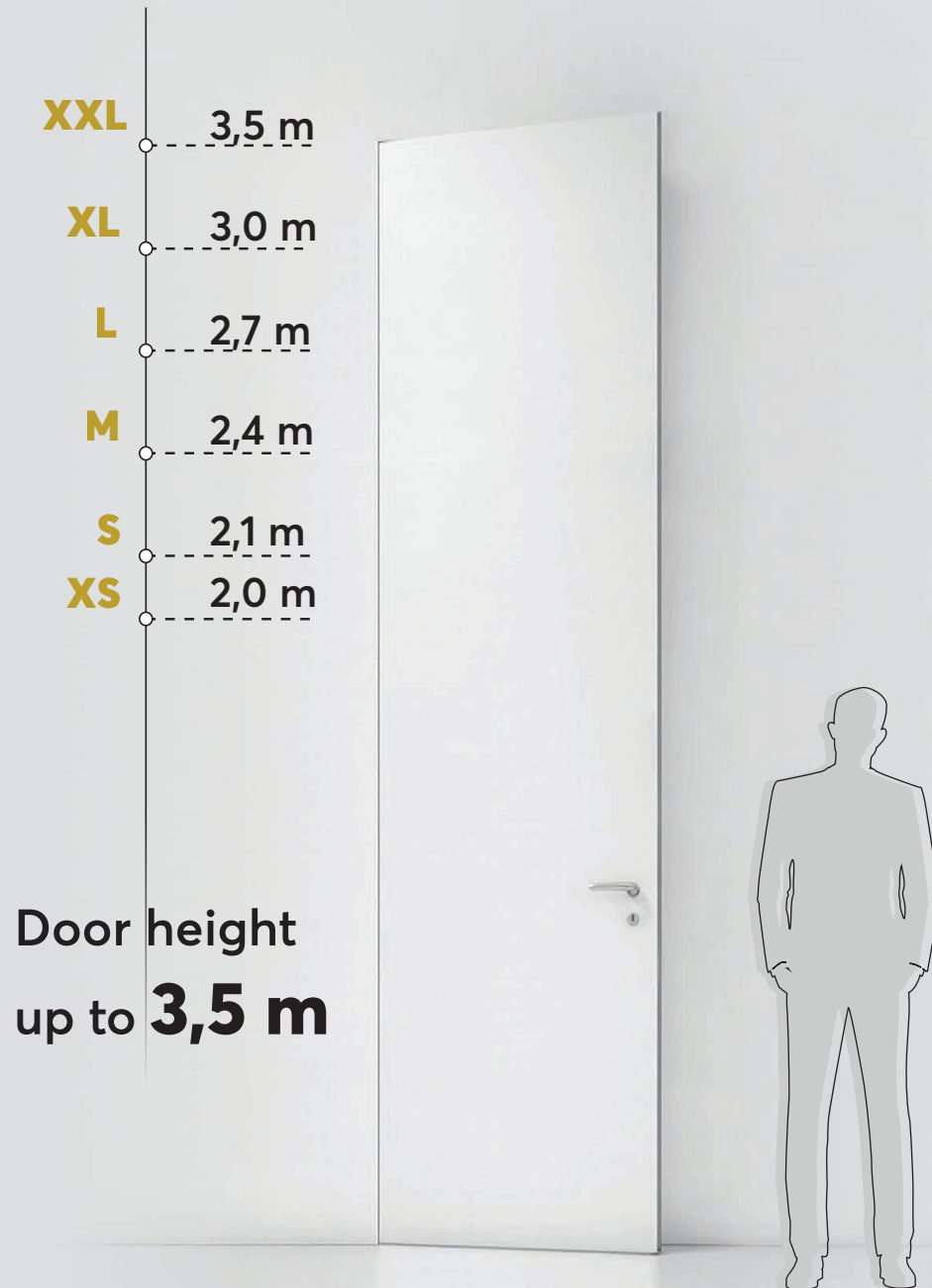
Concealed door frame
INVISIBLE

Patent UNION



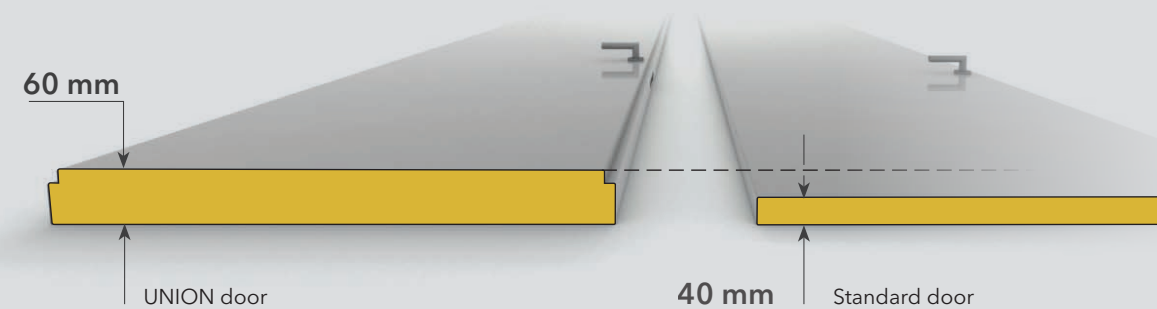
- Door leaf
thickness 60 mm
- Door ledge
- Aluminum
edge door leaf
- Sealant SHLEGEL
(made in Germany)
- Main frame factory
anodized or powder
coating availiabl
- Supports, 10 pcs
easy to attach and
adjust (made in Italy)
- Additional subframe
additional rigidity,
easy to install
- Fastening cable
for reinforced mesh
- Plaster
- Drywall
- Reinforcing mesh
protects against
surface cracking
- Top wall finishing

SIZE MATTERS



Thickness of UNION door
up to **60 mm**

It's **50%** thicker
than an standard door

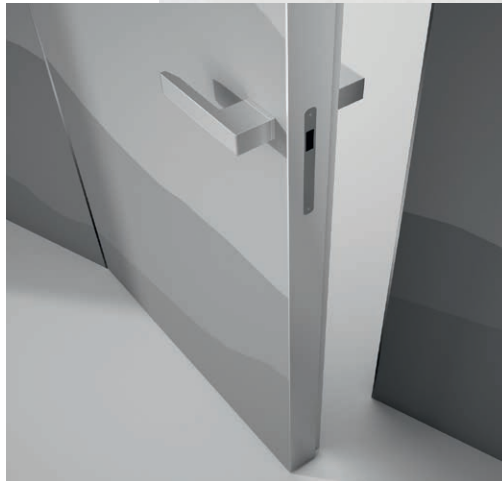




01

**Always in stock.
Invisible doors ready
to for painting**

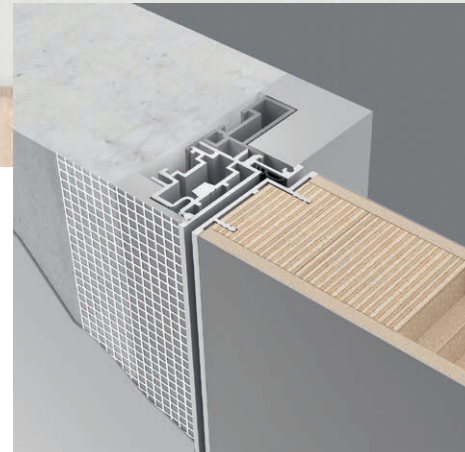
Always in stock, ready for quick shipment, unique FILO-60, Fondo doors with 60mm thickness in standard sizes 60/70/80 x 200/210/240 cm.



02

**Important advantage -
door leaf thickness**

As a rule, the door leaf thickness of other manufacturers does not exceed 40 mm. The leaf thickness of UNION doors is 60 mm. Such doors have better sound insulation and durability. Besides all, they look prestigious and give the solidity to the interior.



03

Hidden frame with false frame

Hidden INVISIBLE frame is totally made from aluminum and it is reinforced by false frame - the additional secondary profile. That's the main difference between the constructions of UNION hidden frames from any standard hidden frames in a market. The rigid reliable construction is designed for long and intensive operation, including for heavy doors. Initially the frame is anodized in silver aluminum, but it can be also painted in a wall color or in any color according to the factory catalogue.

04

Height up to 3.5 meters

Modern trend, relevant for interiors made in different design. They lift up the ceilings, visually enlarge the room space. Reinforced frame and door leaf structure provides the strength and stability during a long-term operation.



05

Complanarity

INVISIBLE hidden frame is integrated in a wall and creates one plane at "pull opening" and "push opening" door. Moreover, it's convenient to add the wall panels from different materials (from wood to glass) to this frame. In any case the complanarity has place - the solidity of surface with wall without protuberances.





06 Wall thickness

There are thin walls made from special materials in construction of some buildings. INVISIBLE frame is ideal for wall mounting from 6 cm thickness. The frame is installed in a thin wall without using a false frame and fixed via frame profile.

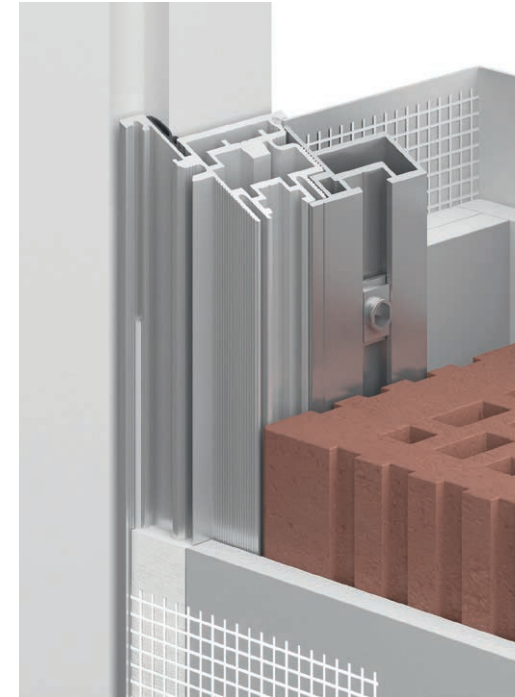
07 Delivery of the assembled frame

The INVISIBLE hidden frame can be delivered fully assembled. It means that the frame is assembled with fixed mounting bars ready to be installed in the doorway. The installers can only set it vertically and fix it to the slopes opening. Thus the installation becomes faster and easier.



08 Aesthetic mounting

The INVISIBLE frame design allows you to create a joint with the tiles, the porcelain tiles or other materials directly tightly, without additional transitional elements and visible gaps. Such a technical solution is specifically provided for doors on hidden frame of both internal and external opening.

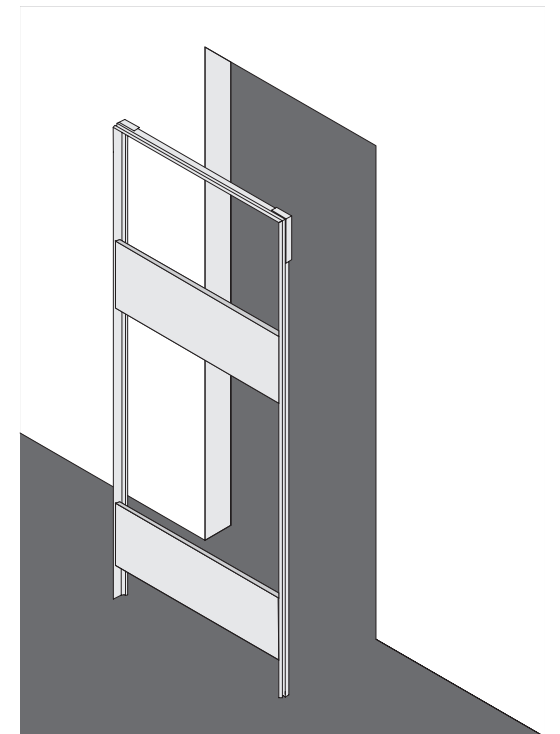


09 Support

There are longitudinal grooves in the profile of the false frame. The tool carriages are installed in these grooves. It is a special fixing device that allows adjusting quickly the frame position by level and then fastening securely the whole construction. It accelerates and simplifies the installation process. Minimum 4 tool carriages are installed in each vertical wall stand of INVISIBLE frame (there are always two of them).

10 Suitable for standard doorways

According to international standards, the door's width 60, 70, 80 and 90 cm are standard. As a rule, many builders prepare the doorways exactly in accordance with those standards. UNION hidden frame doors are designed the way that their geometric dimensions fit into standard doorways that significantly reduce their cost.





11

Humidity resistance

Aluminum INVISIBLE frame makes a door humidity resistant, in contrast to the doors on wood or MDF frame. UNION doors are not exposed to humidity during the wet cleaning or at the wet floor. They can be used in high humidity rooms without fear of wet support structure - the frame.



13

Solidity of finishing

There is a very interesting and trendy option in UNION - the possibility of factory polymer painting in the same color of all metal elements of the door structures. The solidity of finishing of aluminum tip edge, frame and handles create a unique aesthetic integrity and laconism.

14

Rabbeted door

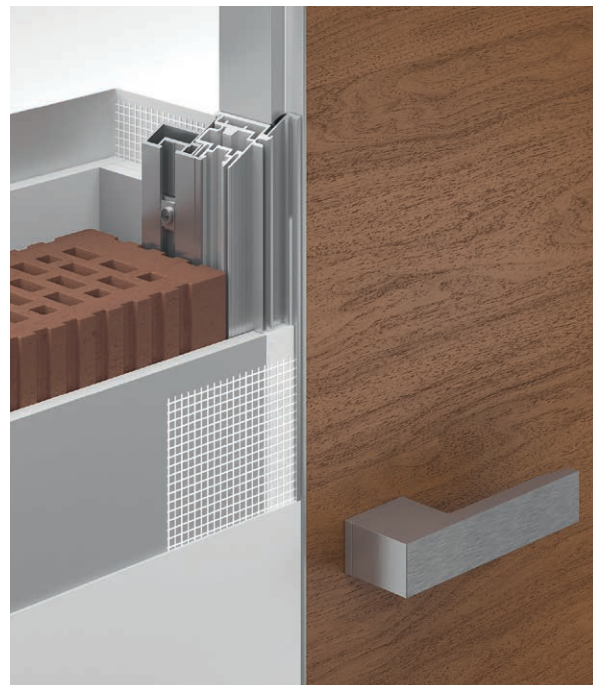
UNION produces the unique 60 mm doors with so-called rabbet ledge. Sometimes we use the terms "doors with groove" or "framed-and-ledged doors" instead of "rabbeted doors". Thanks to the ledge, the door leaf connects better to the frame that increases the sound and heat insulations. Due to the ledge the door becomes flush at different door handing - "pull opening" and "push opening". The ledge also prevents the light penetration in another room.



12

Fabricability

INVISIBLE hidden frame are supplied with a special supporting net along the whole aluminum frame perimeter. This is the important detail when a wall is plastered close to the frame and then painted. The net simplifies the plastering process and excludes the cracks of the wall surface.



15

Aluminum - Low footprint

Aluminum is a natural, eco-friendly and safe material that is not exposed to the environment. Such materials as wooden board, MDF have a number of fundamental defects - they trigger and swell on wetting. There are the doors with PVC elements in a market. This material is very harmful for humans.

FILO-60

INVISIBLE DOORS



Скрытая дверь в классическом интерьере



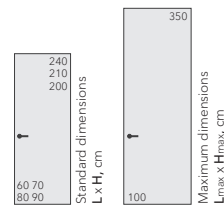
INVISIBLE frame



INVISIBLE Inverso frame



FILO-60, Piatto, L00 Fondo, AL09 Chrome Matt / INVISIBLE



- L

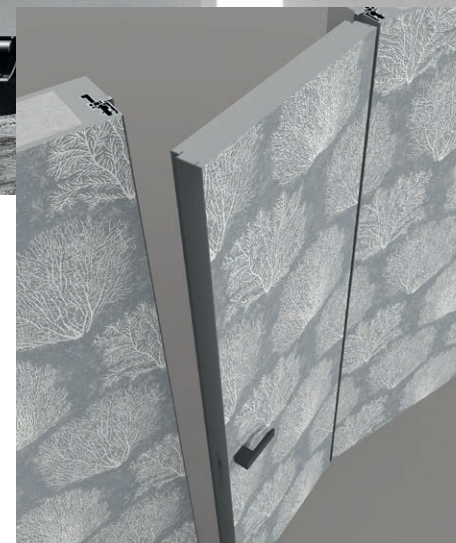
LACCATO MATT
Matt enamels
(L00 Fondo)
- HP

HPL
Composite
material
- V

VENEER NATURAL
Natural wood
veneer
- LG

LACCATO GLOSS
Gloss enamels
- AL

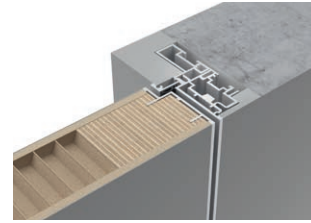
ALUMINIUM
Anodised and
polymer coatings



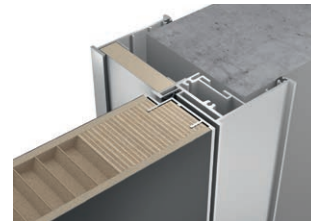
Wallpapering the door and the wall together

FILO-60

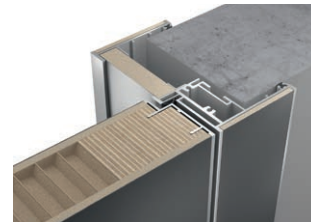
MATTE AND GLOSSY ENAMELS



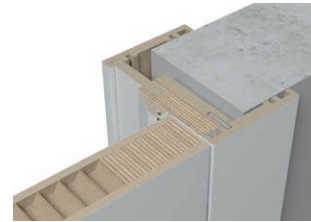
INVISIBLE frame



PLANAR frame

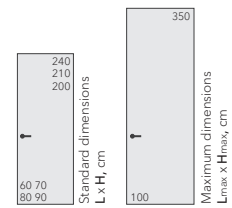


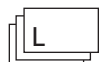

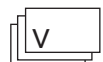


PLANAR frame with insert



UNIDOOR frame

FILO-60, Piatto, L10 Nero, AL09 Chrome Matt / INVISIBLE



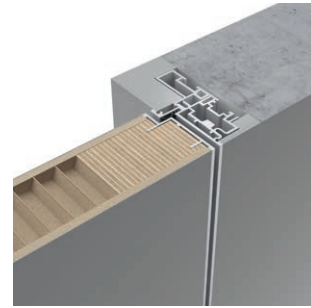
- 
L
 LACCATO MATT
 Matt enamels
 (L00 Fondo)
- 
HP
 HPL
 Composite
 material
- 
V
 VENEER NATURAL
 Natural wood
 veneer
- 
LG
 LACCATO GLOSS
 Gloss enamels
- 
AL
 ALUMINIUM
 Anodised and
 polymer coatings



FILO-60, Piatto, LG11 Tortora Gloss, AL09 Chrome Matt / INVISIBLE

FILO-60

COMPOSITE DECORATIVE MATERIAL



INVISIBLE frame

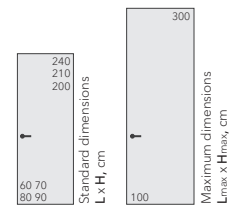


PLANAR frame



PLANAR frame with insert

FILO-60, Piatto, L10 Nero, AL08 Black / INVISIBLE



- L

LACCATO MATT
Matt enamels
(L00 Fondo)
- HP

HPL
Composite
material
- V

VENEER NATURAL
Natural wood
veneer
- LG

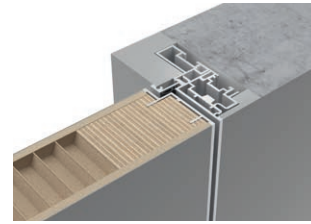
LACCATO GLOSS
Gloss enamels
- AL

ALUMINIUM
Anodised and
polymer coatings

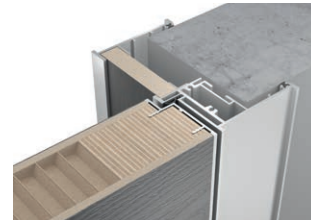
FILO-60, Piatto, HP04 Marmo Bianco, AL09 Chrome Matt / INVISIBLE

FILO-60

NATURAL WOOD VENEER



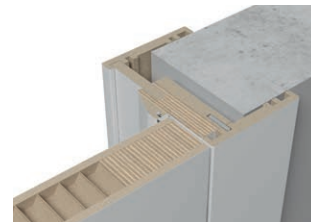
INVISIBLE frame



PLANAR frame

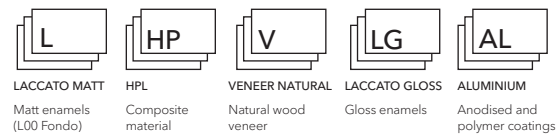
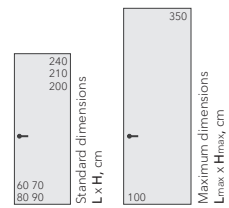
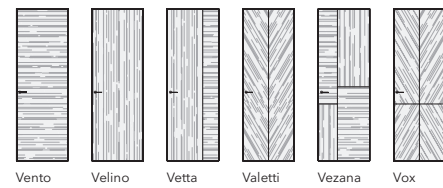


PLANAR frame with insert



UNIDOOR frame

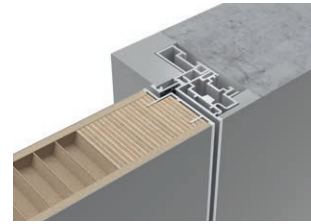
FILO-60, Vento, V10 Rovere Antico, AL08 Black / INVISIBLE



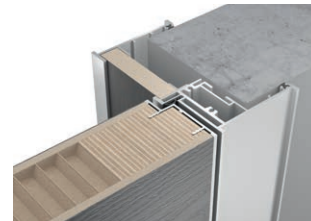
FILO-60, Alu, Vox, V28 Noce Nazionale, AL08 Black / INVISIBLE

FILO-60

NATURAL WOOD VENEER



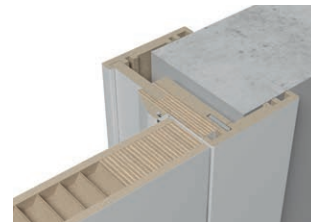
INVISIBLE frame



PLANAR frame

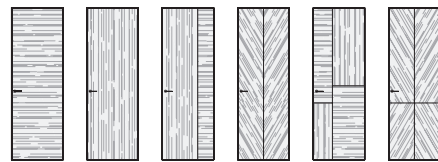


PLANAR frame with insert

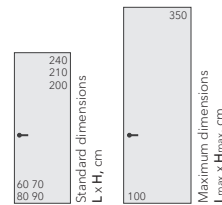


UNIDOOR frame

FILO-60, Vetta, V11 Rovere Tetro, AL06 Piombo / INVISIBLE



Vento Velino Vetta Valetti Vezana Vox



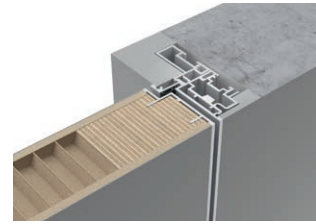
L	HP	V	LG	AL
LACCATO MATT	HPL	VENEER NATURAL	LACCATO GLOSS	ALUMINIUM
Matt enamels (L00 Fondo)	Composite material	Natural wood veneer	Gloss enamels	Anodised and polymer coatings



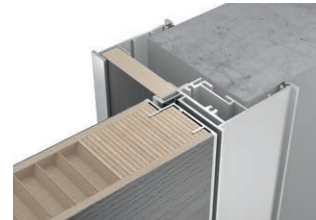
FILO-60, Alu, Valetti, V03 Ebano, AL08 Black / INVISIBLE

FILO-60

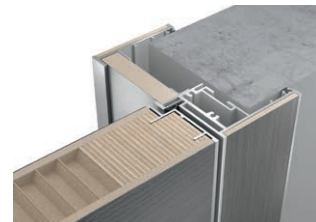
NATURAL WOOD VENEER



INVISIBLE frame



PLANAR frame

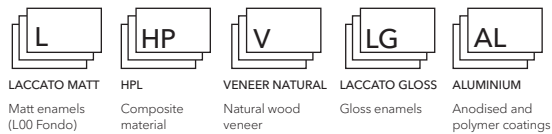
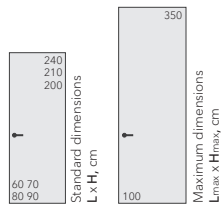
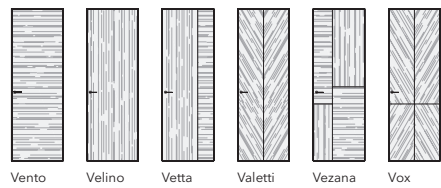


PLANAR frame with insert



UNIDOOR frame

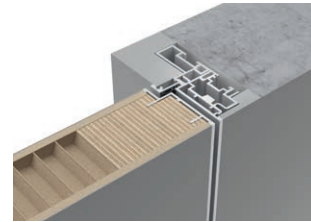
FILO-60, Vento, V16 Noce Canaletto, AL09 Chrome Matt / PLANAR ins.



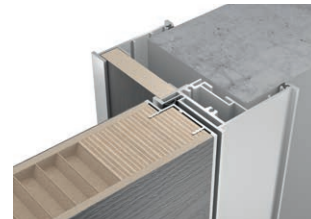
FILO-60, Vento, V13 Rovere Cenere, AL06 Piombo / PLANAR

UNIFLEX-3D

3D MILLING AND RELIEF PATTERN (SOLID, VENEER)



INVISIBLE frame



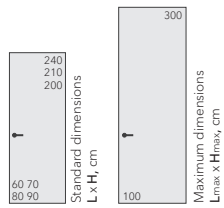
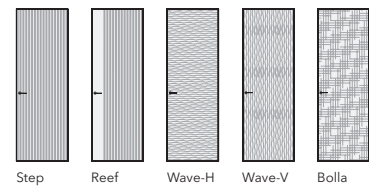
PLANAR frame



PLANAR frame with insert



UNIFLEX-3D, Alu, Bolla, UB16 Noce Canaletto, AL08 Black / INVISIBLE



U
UNIFLEX - 3D
3D milling and
relief pattern

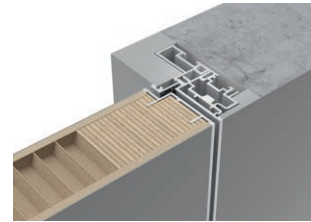
AL
ALUMINIUM
Anodised and
polymer coatings



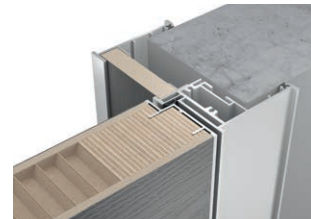
UNIFLEX-3D, Alu, Step, US16 Noce Canaletto, AL07 Dark Brown / PLANAR

UNIFLEX-3D

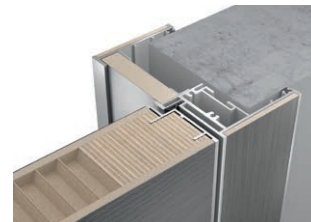
3D MILLING AND RELIEF PATTERN (SOLID, VENEER)



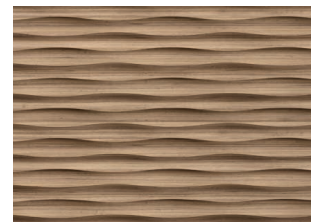
INVISIBLE frame



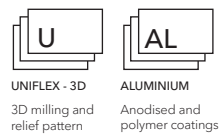
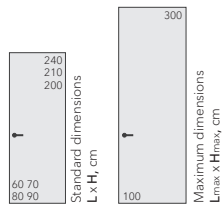
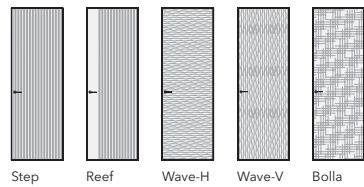
PLANAR frame



PLANAR frame with insert



UNIFLEX-3D, Alu, Wave-H, UW16 Noce Canaletto, AL08 Black / INVISIBLE



UNIFLEX-3D, Alu, Reef, US16 Noce Canaletto, AL08 Black / INVISIBLE

UNIX-60

AFFORDABLE QUALITY

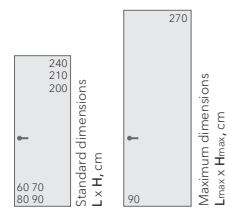


INVISIBLE frame



PLANAR frame

UNIX-60, Piatto, DC08 Noce Chiaro, AL08 Black / INVISIBLE



UNIX-60, Piatto, DC01 Neve, AL09 Chrome Matt / PLANAR



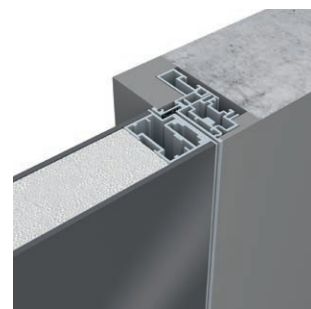
DECORIT
Decorative material



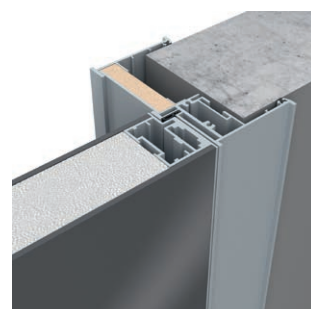
ALUMINIUM
Anodised and polymer coatings

LAGO-60

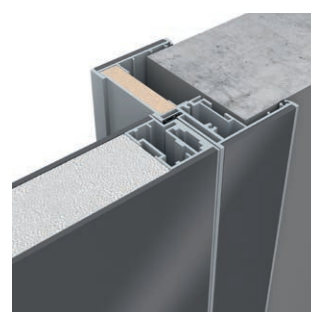
DOUBLE GLASS IN AN REFINED FRAME



INVISIBLE frame

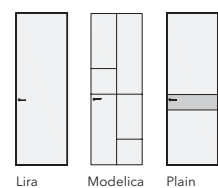


PLANAR frame

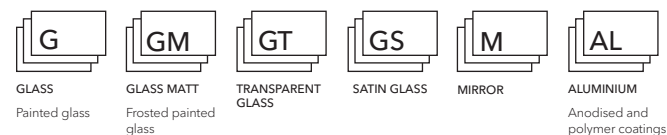
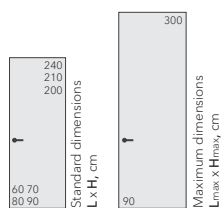


PLANAR frame with insert

LAGO-60, Lira, G01 Bianco, AL09 Chrome Matt / INVISIBLE



Lira Modelica Plain



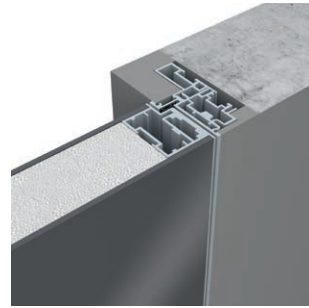
LAGO-60, Lira, G10 Nero, AL09 Chrome Matt / INVISIBLE

LAGO-60

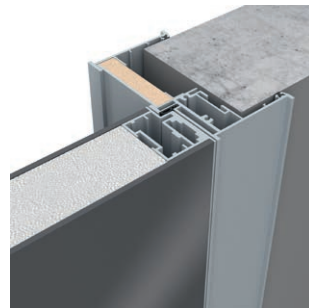
DOUBLE GLASS IN AN REFINED FRAME



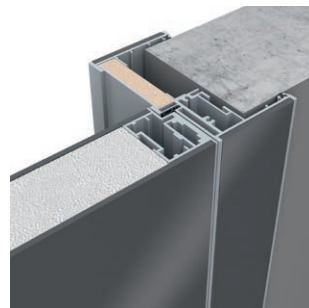
LAGO-60, Plain, G10 Nero, M04 Mirror Antic Gold, AL04 Soft Bronze / INVISIBLE



INVISIBLE frame



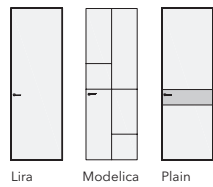
PLANAR frame



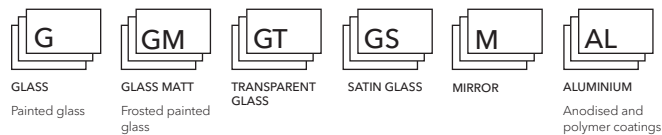
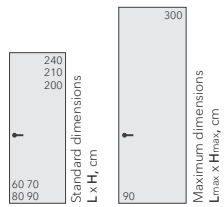
PLANAR frame with insert



LAGO-60, Modelica, G06 Grigio Seta, AL08 Black / INVISIBLE

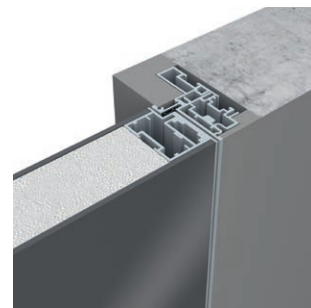


Lira Modelica Plain

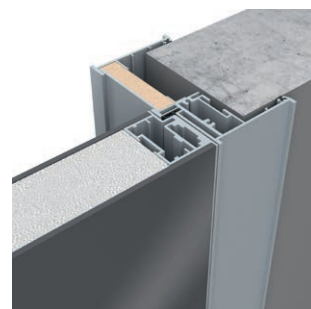


LAGO-60

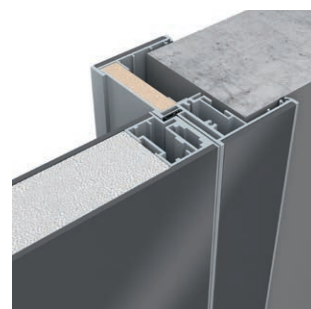
DOUBLE GLASS IN AN REFINED FRAME



INVISIBLE frame

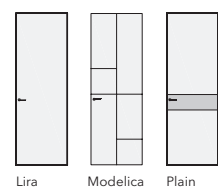


PLANAR frame

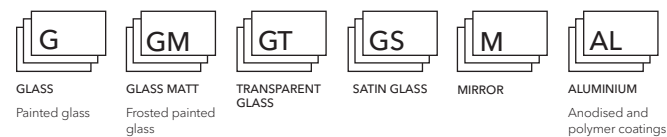
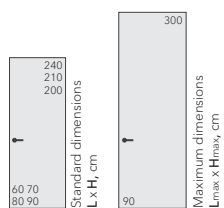


PLANAR frame with insert

LAGO-60, Lira, G13 Rocca, AL09 Chrome Matt / PLANAR ins.



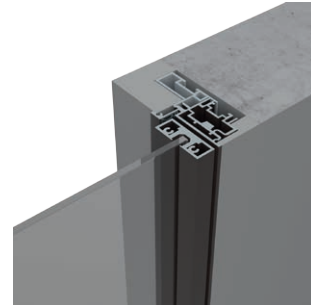
Lira Modelica Plain



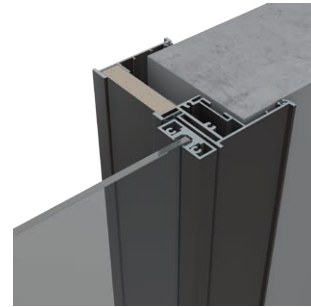
LAGO-60, Modelica, M02 Mirror Grey, AL03 Soft Gold / PLANAR

SLIM

DECORATIVE GLASS IN ALUMINIUM STRUCTURES

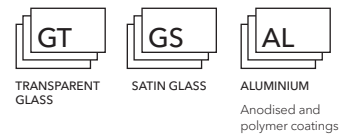
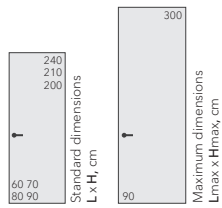
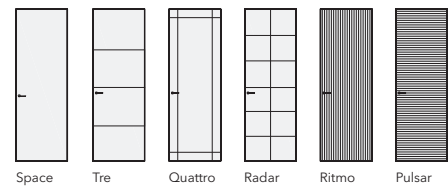


INVISIBLE frame

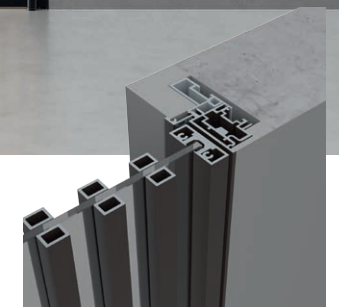


PLANAR frame

SLIM, Space, GT05 Sole, AL08 Black / INVISIBLE

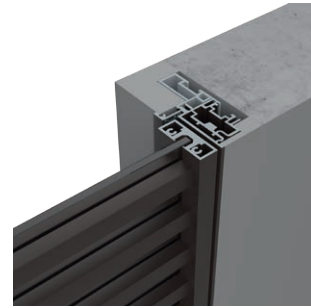
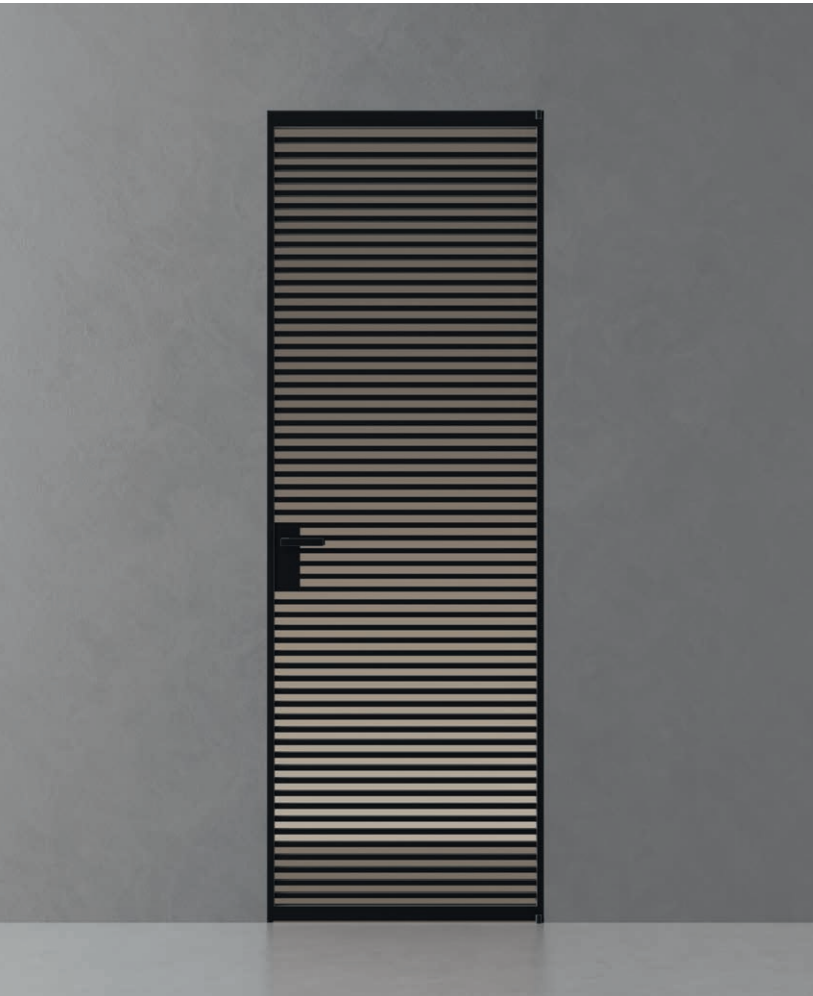


SLIM, Ritmo, GT03 Trasparente Bronzo, AL08 Black / INVISIBLE

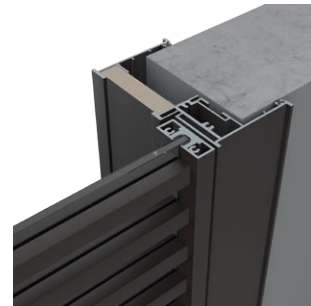


SLIM

DECORATIVE GLASS IN ALUMINIUM STRUCTURES

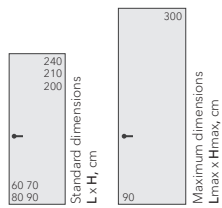
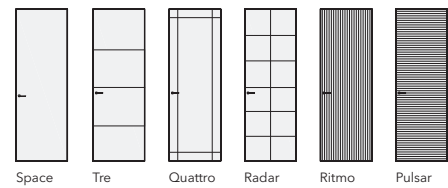


INVISIBLE frame

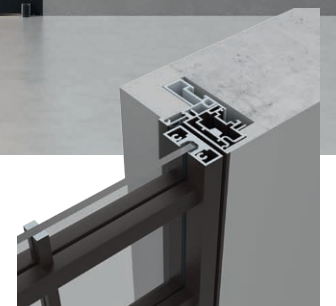


PLANAR frame

SLIM, Pulsar, GT03 Trasparente Bronzo, AL08 Black / INVISIBLE



SLIM, Radar, GT02 Trasparente Grafite, AL08 Black / INVISIBLE



TONDA

PREMIUM DOORS WITH ROUNDED EDGES



TONDA frame without adjustment



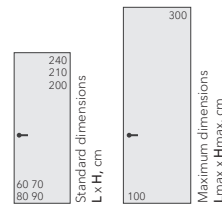
TONDA frame with adjustment

TONDA, Ego, LG01 Bianco Gloss, AL08 Black



Tirol

Ego



L	LG	AL
LACCATO MATT Matt enamels	LACCATO GLOSS Gloss enamels	ALUMINIUM Anodised and polymer coatings



TONDA, Tirol, LG01 Bianco Gloss, AL08 Black

PIVOT-45

PIVOTING DOORS



PIVOT-45, SLIM, Tre, GT01 Trasparente, AL08 Black



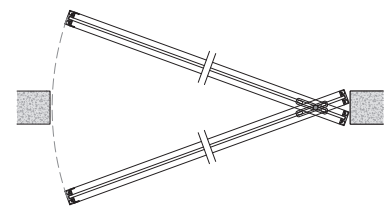
PIVOT-45, SLIM, without frame



PIVOT-45, LAGO, without frame



PIVOT-45, FILO, without frame



PIVOT-45. Fixing in the "closed" and "opened" positions - on both sides.



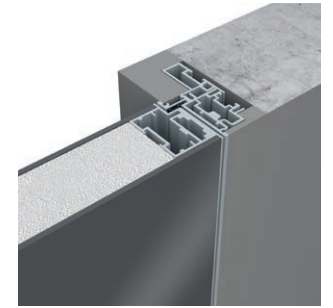
- | | | | | | | | | | |
|---|------------------------------|--|--------------------------------|--|---------------------------------|--|----------------------|-------------|----------|
| L | HP | V | LG | U | G | GM | GT | GS | M |
| LACCATO MATT
Matt enamels
(L00 Fondo) | HPL
Composite
material | VENEER NATURAL
Natural wood
veneer | LACCATO GLOSS
Gloss enamels | UNIFLEX - 3D
3D milling and
relief pattern | GLASS
Gloss painted
glass | GLASS MATT
Frosted painted
glass | TRANSPARENT
GLASS | SATIN GLASS | MIRROR |

PIVOT-60

PIVOTING DOORS



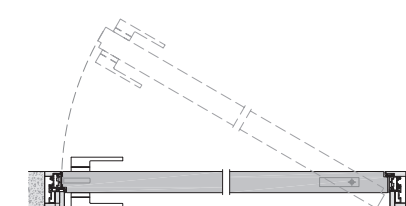
PIVOT-60, FILO, Piatto, L00 Fondo, AL09 Chrome Matt / INVISIBLE



PIVOT-60, LAGO, INVISIBLE frame



PIVOT-60, FILO, INVISIBLE frame



PIVOT-60. Door leaf 60 mm.
INVISIBLE frame.



- | | | | | | | | |
|---|------------------------------|--|--------------------------------|--|---------------------------------|--|----------|
| L | HP | V | LG | U | G | GM | M |
| LACCATO MATT
Matt enamels
(L00 Fondo) | HPL
Composite
material | VENEER NATURAL
Natural wood
veneer | LACCATO GLOSS
Gloss enamels | UNIFLEX - 3D
3D milling and
relief pattern | GLASS
Gloss painted
glass | GLASS MATT
Frosted painted
glass | MIRROR |

TREND

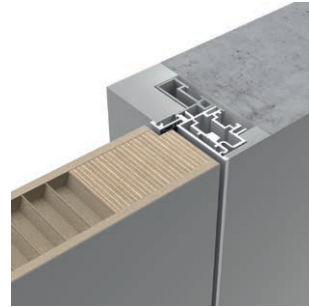
TRADITIONAL DOORS



TREND-45, TR18, L06 Grigio Seta, AL08 Black / UNIDOOR



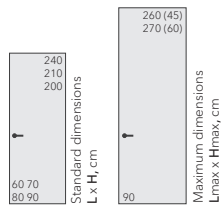
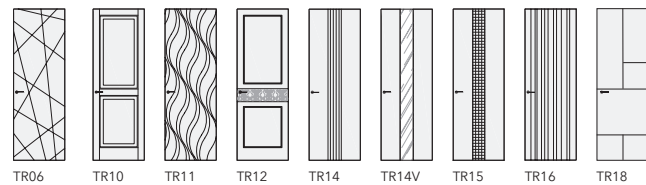
TREND-45, UNIDOOR frame



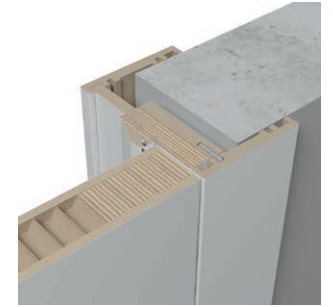
TREND-60, INVISIBLE frame



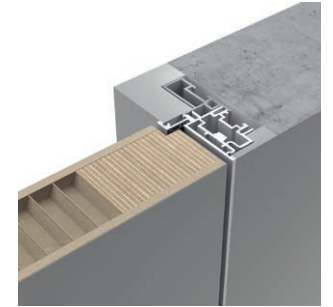
TREND-60, PLANAR frame



ALDA-45, 101, L01 Bianco / UNIDOOR



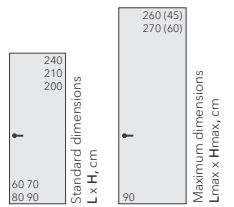
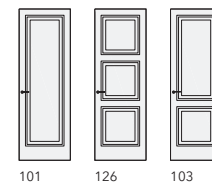
ALDA-45, UNIDOOR frame



ALDA-60, INVISIBLE frame



ALDA-60, PLANAR frame



LACCATO GLOSS
Gloss enamels



LACCATO GLOSS
Gloss enamels



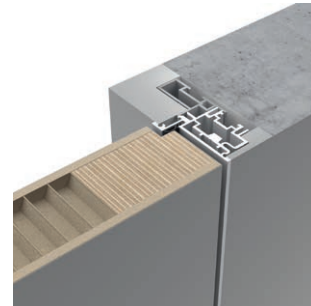
LACCATO GLOSS
Gloss enamels

LEVEL

TRADITIONAL DOORS



LEVEL-45, UNIDOOR frame

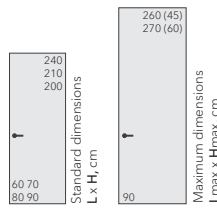
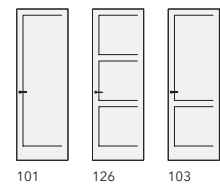


LEVEL-60, INVISIBLE frame



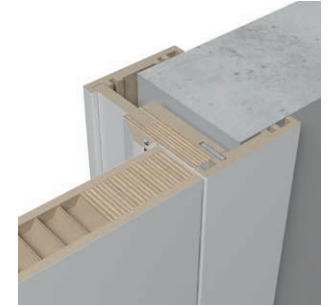
LEVEL-60, PLANAR frame

LEVEL-45, 101, L01 Bianco / UNIDOOR

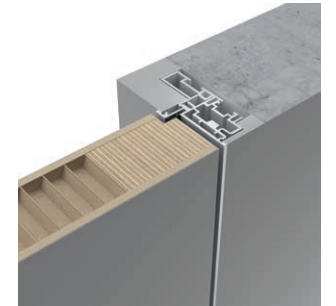


CORDA

CLASSIC STYLE DOORS

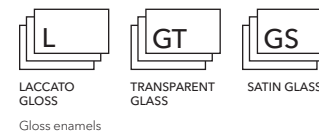
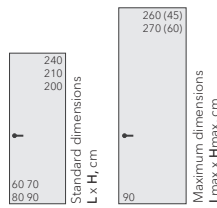
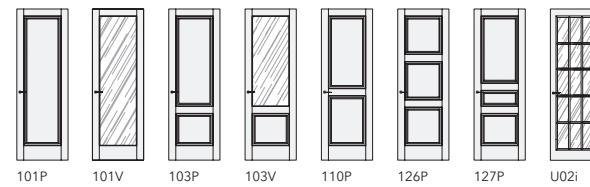


CORDA-45, UNIDOOR frame



CORDA-60, INVISIBLE frame

CORDA-45, 127P, L01 Bianco / UNIDOOR



GRAND

CLASSIC STYLE DOORS



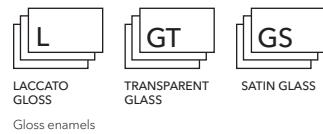
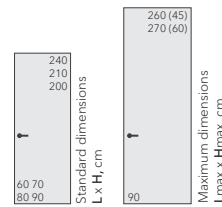
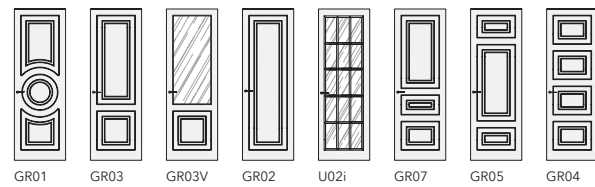
GRAND-45, GR01, L01 Bianco / UNIDOOR



GRAND-45, UNIDOOR frame



GRAND-60, INVISIBLE frame



PRIMA

CLASSIC STYLE DOORS



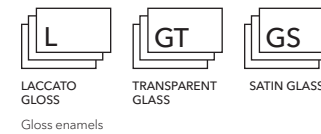
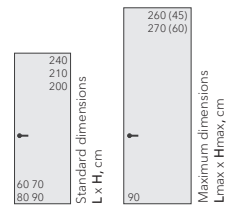
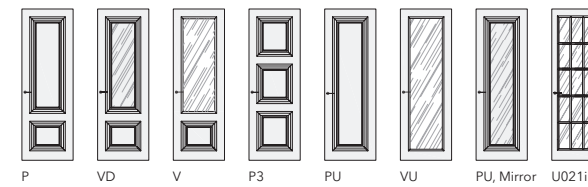
PRIMA-45, P, L01 Bianco / UNIDOOR



PRIMA-45, UNIDOOR frame



PRIMA-60, INVISIBLE frame



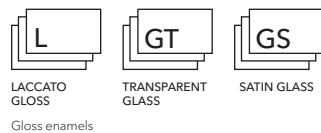
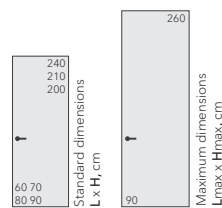
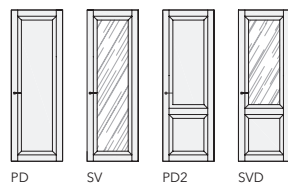
STELLA

CLASSIC STYLE DOORS



UNIDOOR frame

STELLA, PD, L01 Bianco / UNIDOOR



DELTApro

METAL ENTRANCE DOORS



DELTApro with front panel
HP06 Marmo Antracite

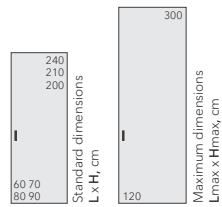
SLIDER

SLIDING POCKET DOORS AND PARTITIONS



1. SLIDER-FILO, L00 Fondo

2. MINI, L00 Fondo



- L**
LACCATO MATT
Matt enamels (L00 Fondo)
- HP**
HPL
Composite material
- V**
VENEER NATURAL
Natural wood veneer
- LG**
LACCATO GLOSS
Gloss enamels
- U**
UNIFLEX - 3D
3D milling and relief pattern
- G**
GLASS
Gloss painted glass
- GM**
GLASS MATT
Frosted painted glass
- GT**
TRANSPARENT GLASS
- GS**
SATIN GLASS
- M**
MIRROR

MAGIC

INVISIBLE SLIDING DOOR SYSTEM



MAGIC-FILO, Alu, Vento V17 Rovere Chiaro, AL09 Chrome Matt



- L**
LACCATO MATT
Matt enamels (L00 Fondo)
- HP**
HPL
Composite material
- V**
VENEER NATURAL
Natural wood veneer
- LG**
LACCATO GLOSS
Gloss enamels
- U**
UNIFLEX - 3D
3D milling and relief pattern
- G**
GLASS
Gloss painted glass
- GM**
GLASS MATT
Frosted painted glass
- M**
MIRROR
- AL**
ALUMINIUM
Anodised and polymer coatings

STRATUS

SLIDING DOORS AND PARTITIONS



STRATUS-LAGO, Lira, G13 Rocca, AL08 Black / Pm22



ceiling track



build-in track



wall track



- | | | | | | | | | | |
|--------------------------|--------------------|---------------------|---------------|-------------------------------|---------------------|-----------------------|-------------------|-------------|--------|
| | | | | | | | | | |
| LACCATO MATT | HPL | VENEER NATURAL | LACCATO GLOSS | UNIFLEX - 3D | GLASS | GLASS MATT | TRANSPARENT GLASS | SATIN GLASS | MIRROR |
| Matt enamels (L00 Fondo) | Composite material | Natural wood veneer | Gloss enamels | 3D milling and relief pattern | Gloss painted glass | Frosted painted glass | | | |



STRATUS-FILO, Alu, Vento, V22 Mogano, AL08 Black / Pm24

STRATUS

SLIDING DOORS AND PARTITIONS



Maximum dimensions
Lmax x Hmax, cm

- GT

TRANSPARENT
GLASS
- GS

SATIN GLASS
- AL

ALUMINIUM
Anodised and
polymer coatings



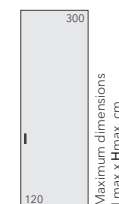
1. STRATUS-SLIM, Space, GT02 Trasparente Grafite, AL08 Black / Pm24
2. ALTO, DC03 Noce Tradizionale, AL08 Black

STRATUS

РАЗДВИЖНЫЕ ДВЕРИ И ПЕРЕГОРОДКИ



STRATUS-SLIM, Space, GT05 Sole, AL08 Black / S12N

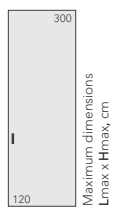


TRANSPARENT
GLASS

SATIN GLASS

ALUMINIUM

Anodised and
polymer coatings



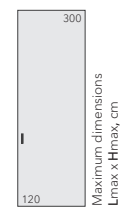
Maximum dimensions
Lmax x Hmax, cm

- GT**
TRANSPARENT GLASS
- GS**
SATIN GLASS
- AL**
ALUMINIUM
Anodised and polymer coatings

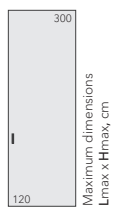
1. STRATUS-SLIM, Pulsar, GT01 Trasparente, AL08 Black / Pm23
2. ALTO, DC04 Rovere Termo, AL08 Black



1. STRATUS-SLIM, Ritmo, GT02 Trasparente Grafite, AL08 Black / Pm23
2. ALTO, DC03 Noce Tradizionale, AL08 Black



 GT TRANSPARENT GLASS	 GS SATIN GLASS	 AL ALUMINIUM Anodised and polymer coatings
---------------------------------------	------------------------------	--



- GT

TRANSPARENT GLASS
- GS

SATIN GLASS
- AL

ALUMINIUM
Anodised and
polymer coatings

1. STRATUS-SLIM, Quattro, GS06 Stopsol Grafite, AL03 Soft Gold / P12
2. PORTOFINO, Zenit 26
3. MOON, V20 Noce Americano, AL03 Soft Gold
4. ALTO, DC02 Frassino Grigio, AL03 Soft Gold
5. COVER, Valetti, V20 Noce Americano



STRATUS-SLIM, Radar, GT02 Trasparente Grafite, AL08 Black / Pm22



STRATUS-SLIM, Tre, GT03 Trasparente Bronzo, AL03 Soft Gold / Pm23



WALLSTREET

PERMANENT PARTITIONS



WALLSTREET-SLIM, Space, GT02 Trasparente Bronzo, AL09 Chrome Matt

- L**

LACCATO MATT
Matt enamels
(L00 Fondo)
- HP**

HPL
Composite
material
- V**

VENEER NATURAL
Natural wood
veneer
- LG**

LACCATO GLOSS
Gloss enamels
- U**

UNIFLEX - 3D
3D milling and
relief pattern
- G**

GLASS
Glass painted
glass
- GM**

GLASS MATT
Frosted painted
glass
- GT**

TRANSPARENT
GLASS
- GS**

SATIN GLASS
- M**

MIRROR

TRANSFORMER

FOLDING SLIDING PARTITION WALLS



TRANSFORMER Vario, Velino, V16 Noce Canaletto



- L**

LACCATO MATT
Matt enamels
- HP**

HPL
Composite
material
- V**

VENEER NATURAL
Natural wood
veneer
- LG**

LACCATO GLOSS
Gloss enamels



COVER, LG14 Ombra Gloss

- L

LACCATO MATT
Matt enamels
(L00 Fondo)
- HP

HPL
Composite
material
- V

VENEER NATURAL
Natural wood
veneer
- LG

LACCATO GLOSS
Gloss enamels
- U

UNIFLEX - 3D
3D milling and
relief pattern



- 1. COVER, Vento, V20 Noce Americano
- 2. LUMINA, GT02 Trasparente Grafite, AL08 Black



4

1

2

3

1. COVER, Step, US16 Noce Canaletto
2. UNIFLEX-3D, Alu, Step, US16 Noce Canaletto, AL08 Black / INVISIBLE
3. STRATUS, Alu, Step, US16 Noce Canaletto, AL08 Black / Pm22
4. ALTO, DC03 Noce Tradizionale, AL08 Black



- 1. Wall panels **PRIMA**, L01 Bianco
- 2. **PRIMA**, P, L01 Bianco/ **UNIDOOR**
- 3. **FORMINA**, Prima, L01 Bianco



- 1. **LUMINA**, GT02 Trasparente Grafite, AL08 Black
- 2. **COVER**, Bolla, UB16 Noce Canaletto
- 3. **MOON**, HP06 Marmo Antracite, AL08 Black



DECORIT
Decorative
material



ALUMINIUM
Anodised and
polymer coatings

ALTO, DC04 Rovere Termo, GT02 Trasparente Grafite, AL08 Black



1

1. ALTO, DC03 Noce Tradizionale, GT02 Trasparente Grafite, AL08 Black

2. MOON, HP06 Marmo Antracite, AL08 Black

2

DC
DECORIT
Decorative
material

AL
ALUMINIUM
Anodised and
polymer coatings



DC

DECORIT
Decorative
material

AL

ALUMINIUM
Anodised and
polymer coatings

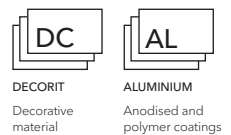
1. ALTO, DC02 Frassino Grigio, GT02 Trasparente Grafite, AL02 Champagne
2. MILAN, HP04 Marmo Bianco, AL02 Champagne

ALTO

SHELVING AND BOOKCASES



1. ALTO, DC03 Noce Tradizionale, GT02 Trasparente Grafite, AL08 Black
2. UNIFLEX-3D, Alu, Step, US16 Noce Canaletto, AL08 Black / INVISIBLE
3. COVER, Step, US16 Noce Canaletto
4. LUMINA, GT02 Trasparente Grafite, AL08 Black
5. PORTOFINO, PR.R1, Piano 4
6. LOTUS, GT02 Trasparente Grafite, AL08 Black





DECORIT
Decorative
material



ALUMINIUM
Anodised and
polymer coatings

FORMINA, DC03 Noce Tradizionale, GT02 Trasparente Grafite, AL08 Black

FORMINA

WARDROBES AND STORAGE SYSTEM



DC

DECORIT
Decorative material

G

GLASS
Painted glass

GM

GLASS MATT
Frosted painted glass

GT

TRANSPARENT GLASS

GS

SATIN GLASS

M

MIRROR

AL

ALUMINIUM
Anodised and polymer coatings

FORMINA, DC03 Noce Tradizionale, GT02 Trasparente Grafite, AL08 Black



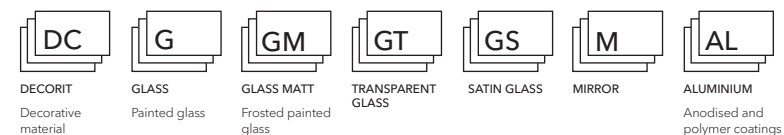
FORMINA, DC07 Frassino Bianco, GT01 Trasparente, AL09 Chrome matt



Front SPARK
Slim aluminium profile
Concealed hinges with door closer
Handle integrated with the profile in the full height of the front.



Front FLAT
Wide aluminium profile
Overlay hinges with door closer
Profile overlay handle on the full height of the front.





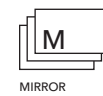
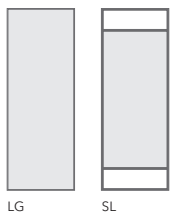
1. ALBA, LG, M01 Mirror, AL08 Black
2. ALTO, DC03 Noce Tradizionale, AL08 Black



ALBA, SL, M01 Mirror, AL08 Black

Standard dimensions
L x H, cm

80x200
70x180
60x180



MIRROR



ALUMINIUM
Anodised and
polymer coatings



MILAN, Vox, V15 Rovere Tabacco, AL07 Dark Brown

- HP

HPL
Composite
material
- V

VENEER NATURAL
Natural wood
veneer
- GT

TRANSPARENT
GLASS
- AL

ALUMINIUM
Anodised and
polymer coatings



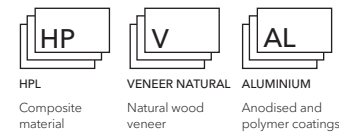
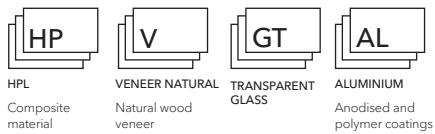
MILAN, GT01 Trasparente, Chrome



LOTUS, GT02 Trasparente Grafite, Chrome



MOON, V16 Noce Canaletto, AL08 Black



PORTOFINO

MODULAR SOFAS



PORTOFINO, D.PR6L, Piano 4



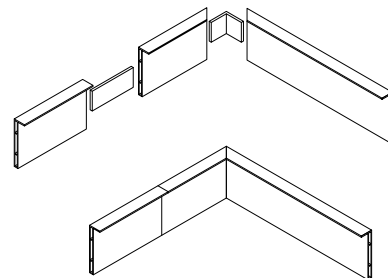
PORTOFINO, PR.D3, Piano 5

* color palette of fabrics on pg.112

SKIRTING BOARDS

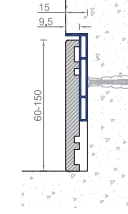


Concealed plinth **MINI**, вставка L01 Bianco



Connectors for plinth **MINI**

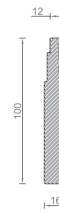
MINI with insert



NP9



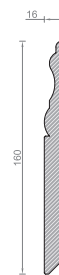
NA10



GIOTTO



PRIMA



LACCATO MATT
Matt enamels



VENEER NATURAL
Natural wood veneer

UNION CONTRACT

PRODUCTION AND SUPPLY OF DOORS AND FURNITURE TO VARIOUS BIG PROJECTS

UNION CONTRACT is a division that deals with the contract supply of various doors, wall panels and furniture for hospitality, offices, medical and other institutions. Thanks to many years of experience and possessing a large-scale production with modern Italian equipment, the company is able to carry out any projects in set terms under efficient proposal and at reasonable prices.

WE OFFER manufacture and supply of:

- Interior doors and partitions of any design up to 3.5 m high
- Entrance and technical doors
- Fire rated doors
- Basic and non-standard cabinet furniture
- Interior decoration with wall panels
- Upholstered furniture





BIG LINE, "made in EU"
Finishes - Aluminium (crp. 111)



ROBOQUATTRO S, COLOMBO "made in ITALY"
Chrome Matt, Black, Chrome, White, Gold



MELODY, "made in EU"
Finishes - Aluminium (crp. 111)



GIRA, COLOMBO "made in ITALY"
Chrome Matt



SQUARE, "made in EU"
Finishes - Aluminium (crp. 111)



PUNTO minimal, "made in ITALY"
Finishes - Aluminium (crp. 111)



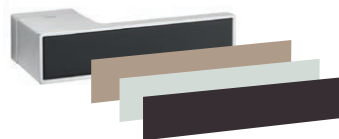
CINTO, "made in EU"
Finishes - Aluminium (crp. 111)



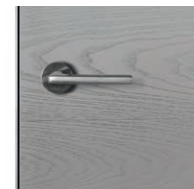
NAXOS, FORME "made in ITALY"
Chrome Matt, Black, Chrome, White



BIG LINE with insert, "made in EU"
Finishes - Aluminium (crp. 111)



BIG LINE handle insert finishes
are shown pp. 100-110



Handle only



Handle with key PAT



Handle with WC lock



Handle with YALE lock



Latch CD 49, COLOMBO "made in ITALY",
Chrome matt



Latch PT 19 BZG, COLOMBO, "made in ITALY",
Chrome Matt, Black, Chrome, White, Gold



Latch PUNTO WC, "made in ITALY"
Finishes - Aluminium (crp. 111)



Latch 3045 RE, "made in EU"
Finishes - Aluminium (crp. 111)



POLARIS, AGB "made in ITALY"
Magnetic silent lock
Chrome mat, Gold, Black, White



HOOK, AGB "made in ITALY"
Lock for sliding door
Chrome mat, Gold, Black, White

COLOMBO finishes



FORME finishes

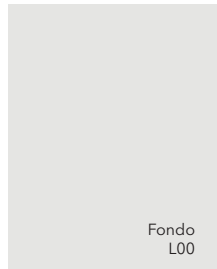


AGB finishes

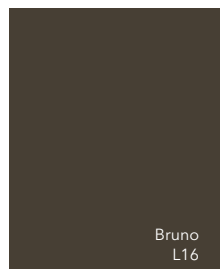
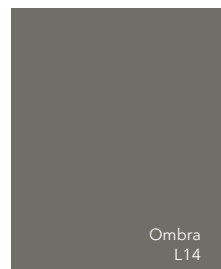
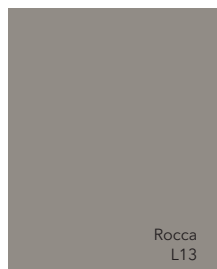
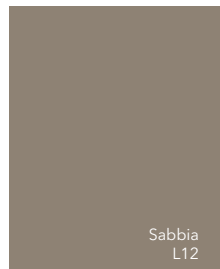
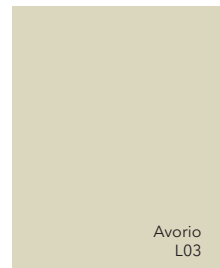
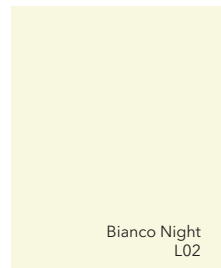


LACCATO MATT 

Painted with matt enamels in production environment on specialized equipment "made in ITALY".

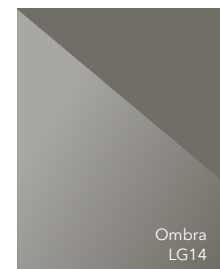
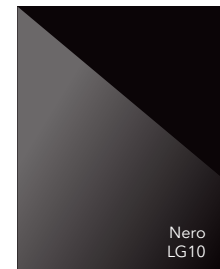
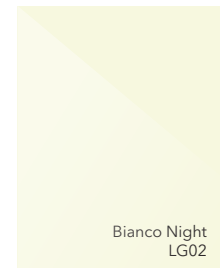
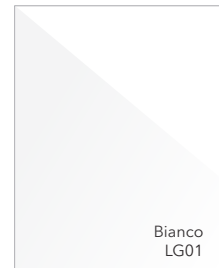


The finishing Fondo is a primer for subsequent painting in any colour with any effects

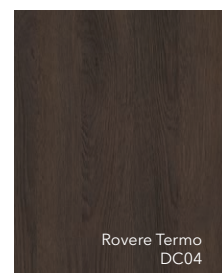
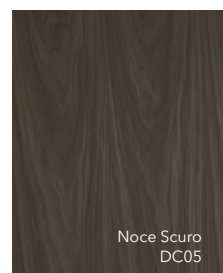
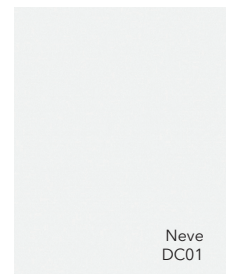


LACCATO GLOSS 

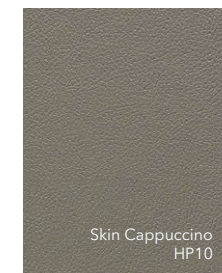
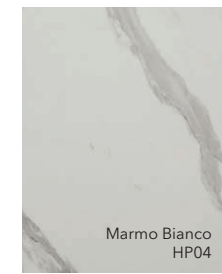
High quality 90 Gloss finish, achieved by applying 8 layers of lacquer and intermediate sanding on specialized equipment "made in ITALY".



DECORIT 
Abrasion-resistant decorative material

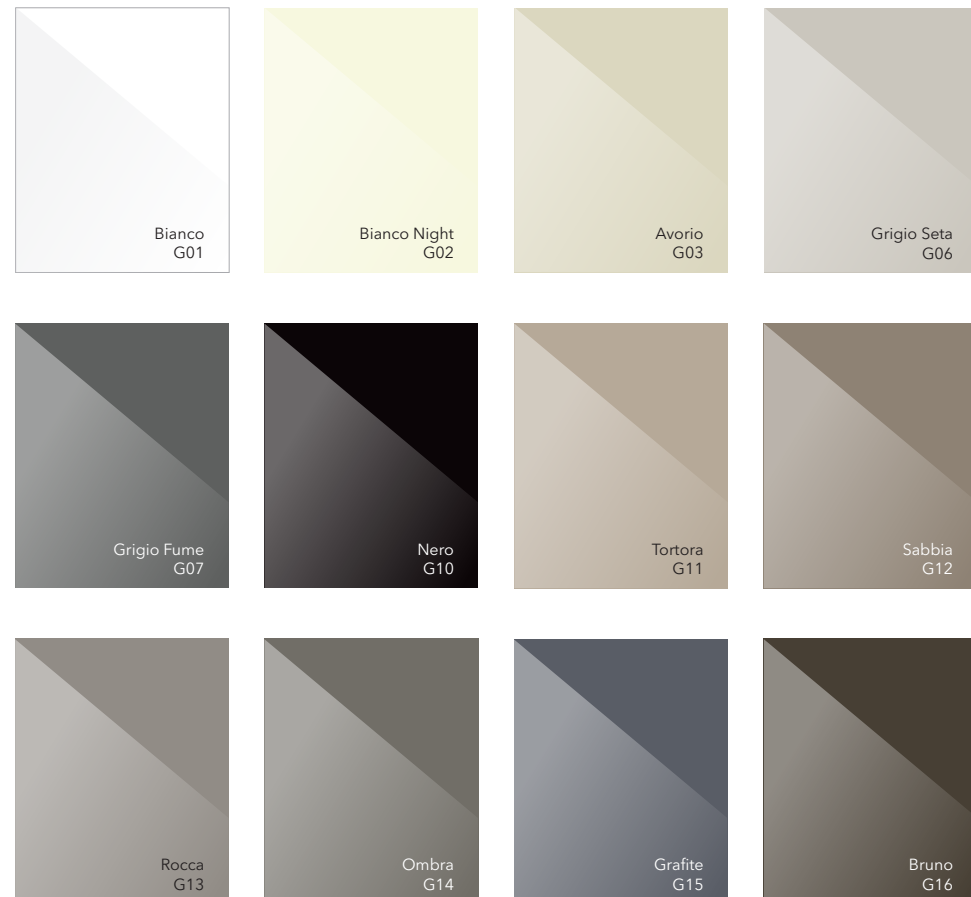


HPL 
Composite decorative material



GLASS 

Glossy glass. Painting on specialized equipment in production conditions.

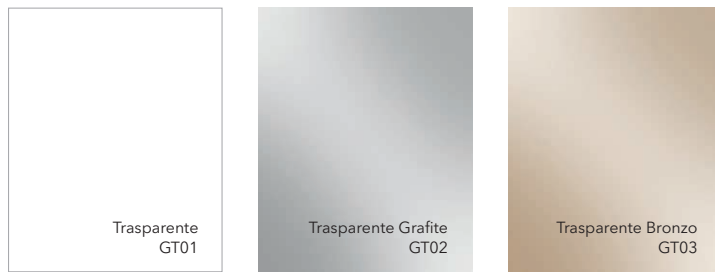


GLASS MATT 

Frosted glass. Painting on specialized equipment in production conditions.



TRANSPARENT GLASS 
Translucent safety glass with decorative effects

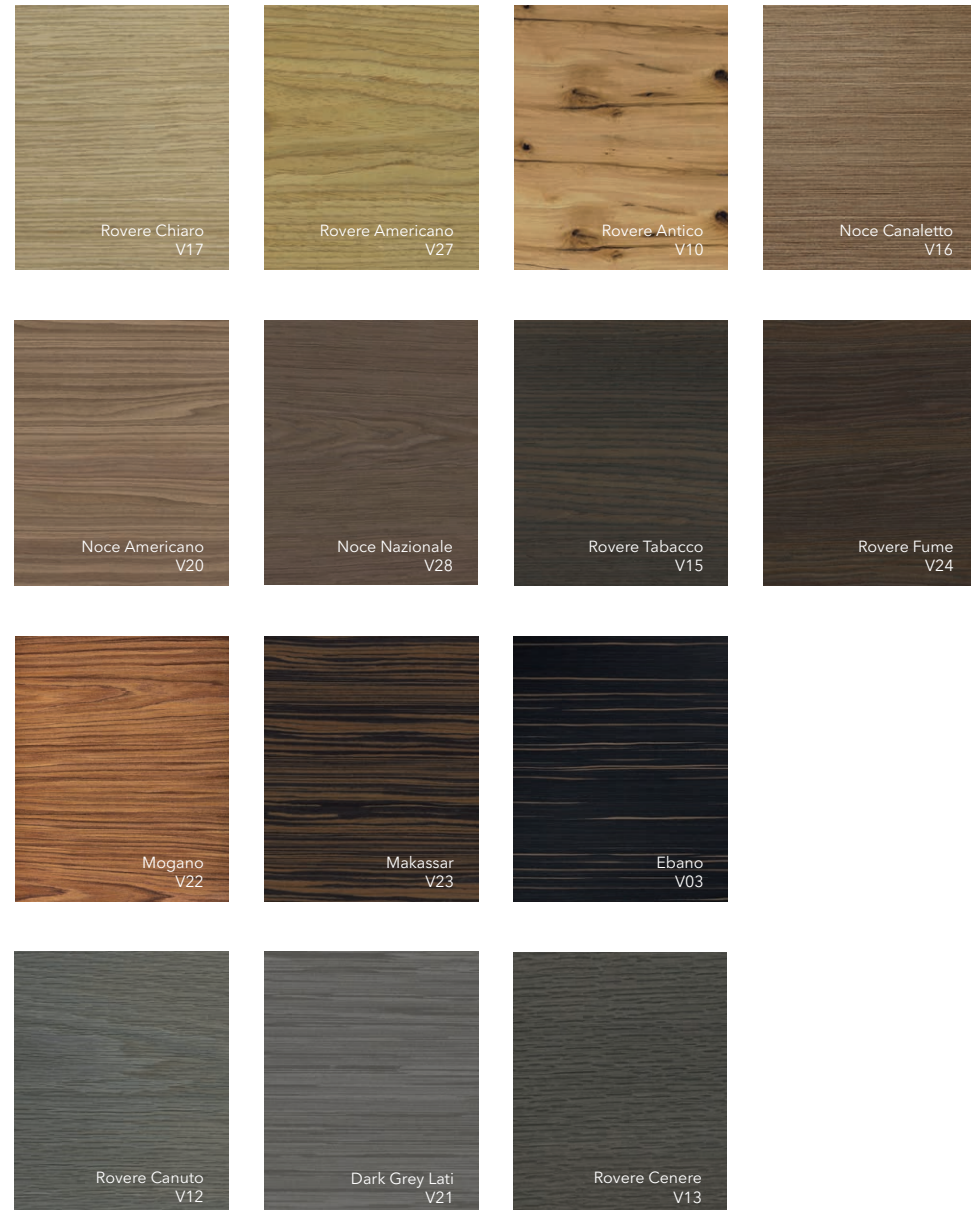


SATIN GLASS 
Frosted safety glass



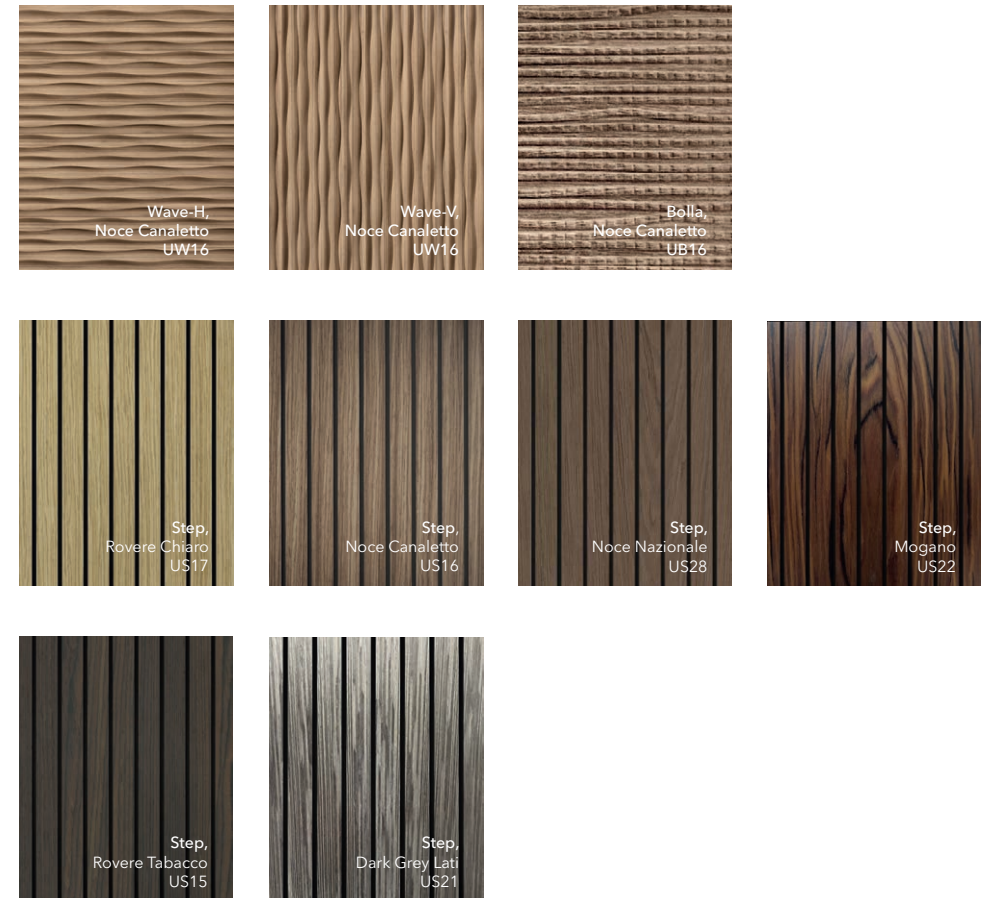
VENEER NATURAL 

Natural wood veneer with open pores matt lacquer finish

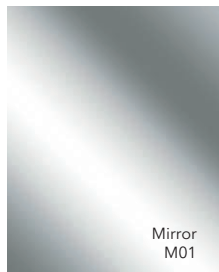


UNIFLEX-3D 

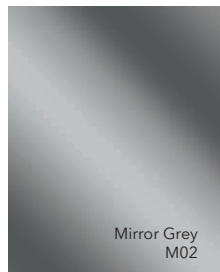
3D milling on solid lamella and relief pattern on natural veneer



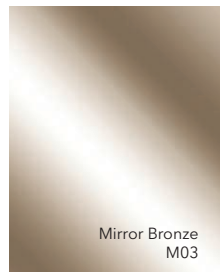
MIRROR 
Colored mirrors



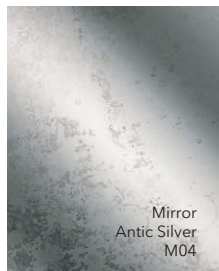
Mirror
M01



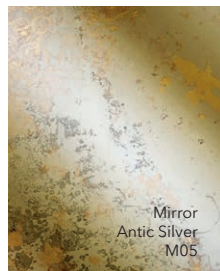
Mirror Grey
M02



Mirror Bronze
M03



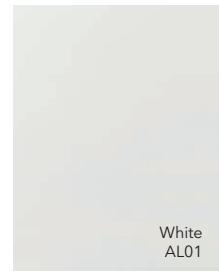
Mirror
Antic Silver
M04



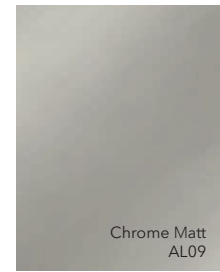
Mirror
Antic Silver
M05

ALUMINIUM 

AL09 - high quality anodised electrochemical coating.
AL02 - AL08. Polymer powder (made in Italy) coating in electrostatic field



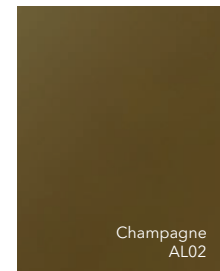
White
AL01



Chrome Matt
AL09



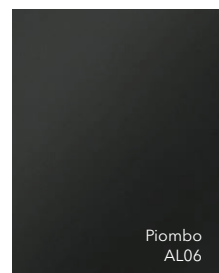
Soft Gold
AL03



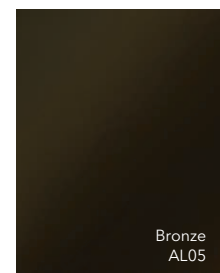
Champagne
AL02



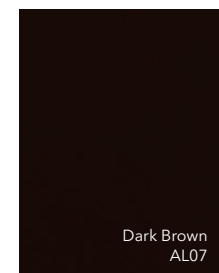
Soft Bronze
AL04



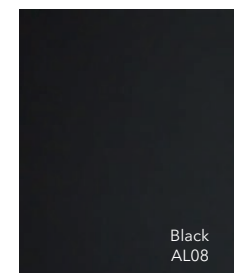
Piombo
AL06



Bronze
AL05



Dark Brown
AL07



Black
AL08

PORTOFINO TEXTILE

Durable, abrasion-resistant fabrics

PIANO



VERONA



ZENIT



Via Flavio Baracchini, 2 - 20100 Milano (Italia)
 +34 600 309731 | +7 915 1557851
 info@unionporte.it
 www.unionporte.it



UNION reserves the right to make changes that do not impair quality to the products presented in this catalog at any time without prior notice. The company is not responsible for incomplete similarity between the originals and the samples in the catalog. Colors and finishes shown in the sample catalog may differ from the original. For more detailed information or to get acquainted with real samples of color solutions / finishes, we recommend contacting the showrooms of the company.

- Instagram uniondoors
- Pinterest uniondoors
- Archiproducts union

+34 600 309731
info@unionporte.it
www.unionporte.it